



长安大学
CHANG'AN UNIVERSITY

PDF COMPRESS



官方微信公众号

CHID

留学长大
行前指南



长安大学
CHANG'AN UNIVERSITY

通信地址：陕西西安市雁塔区南二环中段

电话：029-82334434

传真：02982334434

Email: xxgk@chd.edu.cn

邮编：710064

Welcome To Chang'an University!

PDF COMPRESS

欢迎信

亲爱的同学：
恭喜您已被长安大学录取！
长安大学是国家教育部直属的世界一流学科建设高校，
自1956年开始招收留学生，迄今已有60余年的历史。
欢迎您加入这个大家庭！
为了帮助您了解来华注意事项和西安生活情况，
以便做好相应的准备，
我们专门编写了这本小册子，
希望它能够为您提供准确而有效的信息。
请您仔细阅读，并随身带来西安。
祝您在长安大学学习、生活愉快，
度过一段美好而难忘的时光！

长安大学国际教育学院



長安大學
CHANG'AN UNIVERSITY

1

来华前

1

来华签证

留学生需向中国驻外使馆申请X1或X2签证入境。

① 申请签证所需文件:

- A. 有效护照 (请确保您的护照有效期在6个月以上且有空白签证页)
- B. 录取通知书 (原件)
- C. 外国留学生人员来华签证申请表 (JW202/JW201表)

② 更多详细信息, 请登陆以下网站查看:

中国外交部网: http://www.fmprc.gov.cn/mfa_eng/

中国领事服务网: <http://cs.mfa.gov.cn/wgrlh>

在您取回护照及领取来华签证的同时,
请确保中国驻外使馆把您的录取通知书及JW202/JW201表原件归还给您。

③ 如办理签证时, 遇到录取通知书报道注册时间逾期问题, 请按如下方式联系我们处理:

联系人: 张蕾

电话: +86-29-82334270 传真: +86-29-82334270

电子邮件: apply@chd.edu.cn



2

报到时间

见录取通知书

3

报道所需文件

- A. “X” 签证
- B. 有效护照
- C. 《录取通知书》
- D. 《外国留学人员来华签证申请表》(JW201表或JW202表)

4

逾期报到

按规定时间报到注册。不能按时到校者，应填写《长安大学外国留学生逾期报到申请表》
(下载链接: <http://www.ies.chd.edu.cn/en/watawwownload/list.htm>) 说明原因并办理请假手续, 否则即取消入学资格。

请将下表提前发送至以下邮箱, 如有任何问题请按如下方式联系我们:

联系人: 张紫航

电话: +86-29-82334733

传真: +86-29-82334733

电子邮件: isa@chd.edu.cn



长安大学外国留学生逾期报到申请表

Late Registration Application Form for International Students

护照姓名 Passport Name		
国籍 Nationality		
护照号码 Passport Number		
联系方式 Contact Information	手机 Mobile phone	邮件 Email
计划到校日期 Planned Date of Arrival at Chang'an University		
晚到原因 Reason for late registration		
学生签字 Student's Signature		
留学生管理办公室意见 Comment from Students Affairs Office		

5

行李携带



A.衣物:

九月份,西安气温在20°C-30°C/68°F-86°F之间,夏季气温最高40°C/104°F,冬季气温最低-15°C/5°F,根据温度携带衣服,无需带太多。



B.现金或存款:

全额奖学金学生第一个月生活费将在9月末发放,请各位同学准备好在此之前的生活费,用于证照办理、教材费、住宿押金、床上用品等开支。请携带3000元人民币,以备不时之需,感谢您的理解!



C.生活用品:

生活用品如寝具,毛巾和牙刷等可以在超市买到,无需携带。



D.电器类:

笔记本电脑等电子产品及其配件、电源转换插头、电源变压器、移动电源等。中国标准电压为220V,图片为中国标准插座,请自备电压转换设备



6

出行安全

请保管好您的现金和贵重物品。
您的证件是入华和注册的重要凭证,请妥善保管,以免造成不便。
如遇到任何麻烦,请联系我们:
联系人:张紫航
电话: +86-29-82334733 传真: +86-29-82334733
电子邮件: isa@chd.edu.cn



2 入境后



1 如何来学校



A. 本科生到长安大学渭水校区报道。

渭水校区地址：陕西省西安市朱宏路北段



① 西安咸阳国际机场——长安大学渭水校区

a) 从西安咸阳国际机场乘坐出租车到长安大学渭水校区约25分钟，费用50元人民币。



② 西安火车站——长安大学渭水校区

a) 从西安火车站乘坐出租车到长安大学渭水校区约35分钟，费用40元人民币。



③ 西安高铁北站——长安大学渭水校区

a) 从西安高铁北站乘坐出租车到长安大学渭水校区约15分钟，费用15元人民币。

* 提示：乘坐出租车时请向司机出示学校地址：陕西省西安市朱宏路北段长安大学渭水校区。



B. 博士研究生，硕士研究生和汉语进修生到长安大学本部报道。

长安大学本部地址：西安市南二环中段



① 西安咸阳国际机场——长安大学本部

a) 从西安咸阳国际机场乘坐出租车到长安大学本部约60分钟，费用约150元人民币。



b) 从西安咸阳国际机场乘坐机场大巴到钟楼约40分钟，费用25元人民币，然后坐出租车约15分钟，15元人民币。



② 西安火车站——长安大学本部

a) 从西安火车站乘坐出租车到长安大学本部约25分钟，费用20元人民币。



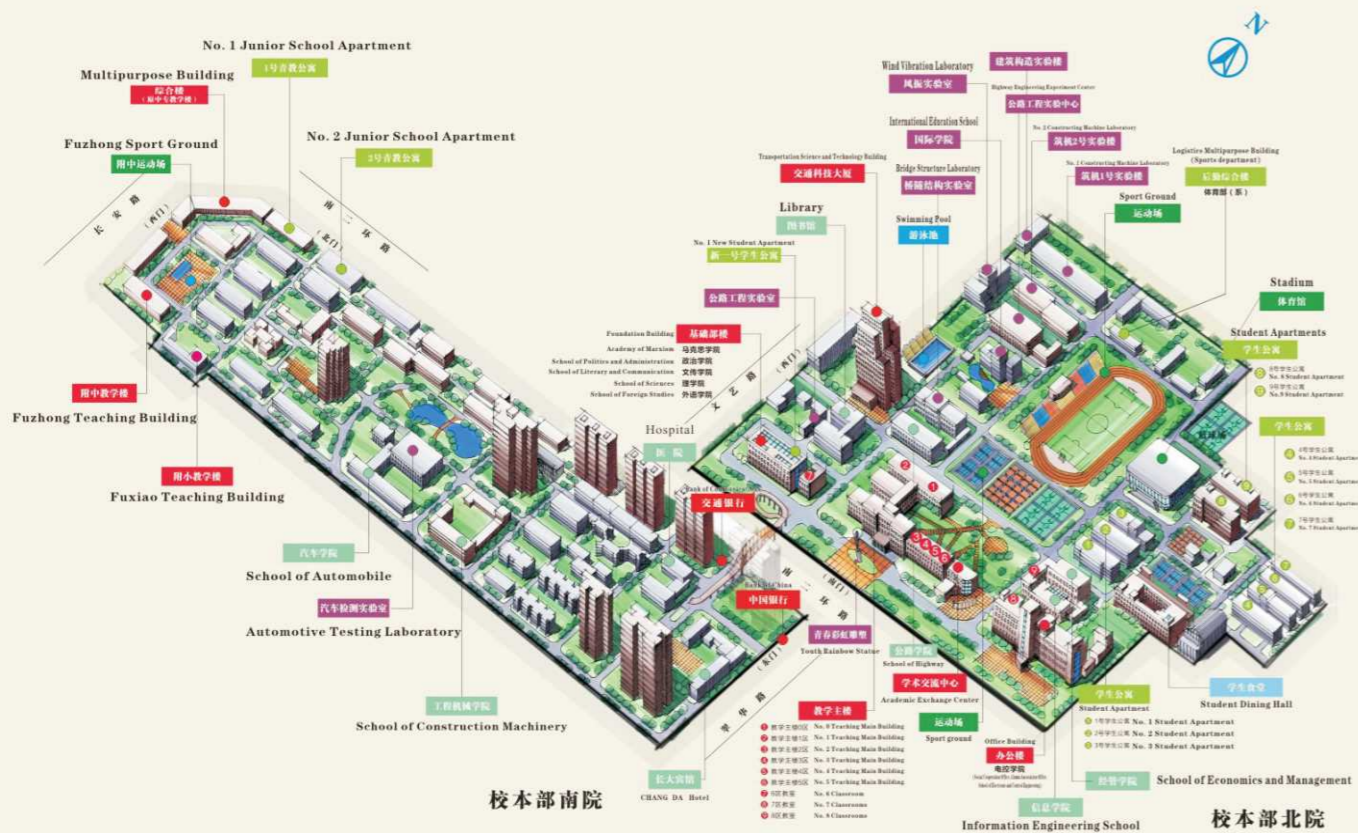
③ 西安高铁北站——长安大学本部

a) 从西安高铁北站乘坐出租车到长安大学本部约50分钟，费用约55元人民币。



b) 从西安高铁北站乘坐地铁2号线至体育场站，转乘出租车至长安大学本部下。

* 提示：乘坐出租车时请向司机出示学校地址：西安市南二环中段长安大学本部



Chang'an University Main Campus



Chang'an University Weishui Campus



2

接机

- ① 接机信息详见学校推送邮件。
- ② 抵达学校后，我可以住在哪里？
 - A. 国际学生通常住在校内学生公寓，或校外租房。
 - B. 请注意，未在学校规定时间内办理入住的学生需自行安排住宿。

3

报道注册具体地点

渭水校区：国际教育学院12号楼
本部校区：国际教育学院
请在指定地点报到，报到流程详见现场海报。

4

临时住宿登记

- ① 校外住宿的留学生，自到达起24小时内，需持护照首页复印件和签证（加盖入境章页）复印件到居住地所属派出所办理“临时住宿登记”。
- ② 在校内住宿的留学生，必须于到校之日在学校办理住宿登记手续。

5

长安大学外国留学生求助卡

Help-me Card for New International Students of Chang'an University

您好,我是长安大学新同学,请帮助我,谢谢!

Hello! I am a new international student of Chang'an University, could you do me a favor?

① 您能送我(或告诉我)如何去下面的地方?

Could you please drive or help me to find the following place?

目的地:

A. 长安大学渭水校区: 陕西省西安市朱宏路北段

B. 长安大学本部北院: 西安市南二环中段

Destination:

A. Chang'an University Weishui Campus

B. Chang'an University (Main Campus), Nan ErHuanZhongDuan

② 我现在要去长安大学国际教育学院办理新生报到手续,请问您能告诉我该怎么去哪里吗?

Could you tell me how to get to International Education School? I will register there as a new student.

如有问题,请帮我拨打留学生管理办公室电话号码:

For inquiry, please call Students Affairs Office for me at: +86-29-82334733

非常感谢您的帮助!

Thanks for your help!





长安大学

CHANG'AN UNIVERSITY



官方微信公众号

CHD

Pre-Departure Guide

Add: middle section of south second ring, yanta district,
xi 'an city, shaanxi province
Tel: 029-82334434
Fax: 02982334434
Email:xxgk@chd.edu.cn
Zip code: 710064



长安大学
CHANG'AN UNIVERSITY

Welcome To Chang'an University!

Welcome to
Chang'an
University!

Dear Students,

Congratulations on your offer of admission to Chang'an University!

Chang'an University is a world-class discipline construction university that directly affiliated the Ministry of Education of the People's Republic of China.

It has been more than 60 years since it started to recruit foreign students in 1956 .

Welcome to this big family!

In order to help you acquaint the matters needed attention and the living conditions in Xi'an, we have specially prepared this booklet for you.

We hope that it can provide you with accurate and effective information.

Please read it carefully and bring Xi'an with you.

Wish you a wonderful and unforgettable stay at Chang'an University!

International Education School of Chang'an University



長安大學
CHANG'AN UNIVERSITY

1

BEFORE COMING TO CHINA

1

Visa Application

International students must apply for study visa (X1/X2) in embassies of China in their home countries.

① **Documents needed:**

- A. Valid passport (Please ensure that your passport is valid for more than 6 months and has blank visa pages.)
- B. Original copy of admission notice
- C. Visa Application Form for Foreign students in China (JW202/JW201 Form)

② **For more details, please search in the following website:**

Ministry of Foreign Affairs of the People's Republic of China:
http://www.fmprc.gov.cn/mfa_eng/
Chinese Consular Service: <http://cs.mfa.gov.cn/wgrlh>
Please make sure your Admission Notice and JW201/JW202 Form are returned to you together with your passport when you obtain your Chinese visa.

③ **If the registration date is overdue when you are applying for the visa, please contact us timely:**

Contact: ZHANG Lei
Tel: +86-29-82334270 Fax: +86-29-82334270 Email: apply@chd.edu.cn



2

Registration Date

Please refer to certain registration dates on admission notice

3

Registration Documents

- A. Study visa (X1/X2)
- B. Valid passport
- C. Original copy of Admission Notice
- D. Visa Application Form for Foreign Students Studying (JW201/JW202)

4

Late Registration Application

Please make sure that you will arrive on time to register.

Those who cannot get to school on time should fill the Late Registration Application Form for International Students, explain the reasons and handle the procedures of leave, otherwise their qualification will be canceled.

You could download the form through this link:

<http://www.ies.chd.edu.cn/en/watawwownload/list.htm>

Please send the form to the following email in advance. If there is any questions, please contact us as follows:

Contact: ZHANG Zihang

Tel: +86-29-82334733

Fax: +86-29-82334733

Email: isa@chd.edu.cn



长安大学外国留学生逾期报到申请表

Late Registration Application Form for International Students

护照姓名 Passport Name		
国籍 Nationality		
护照号码 Passport Number		
联系方式 Contact Information	手机 Mobile phone	邮件 Email
计划到校日期 Planned Date of Arrival at Chang'an University		
晚到原因 Reason for late registration		
学生签字 Student's Signature		
留学生管理办公室意见 Comment from Students Affairs Office		

5 What to Pack

A. Clothing:

In September, the temperature in Xi'an is between 20°C and 30°C /68°F and 86°F, the highest temperature in summer was 40°C/104°F and the lowest temperature in winter was -15°C/5°F. So please bring clothes on the basis of temperature. There is no need to take too much.

B. How Much Money to Bring:

The first month's (September) living stipend for full scholarship students will be paid at the end of September, please bring money for the first month's expense in China, including the official document fee, textbook fee, accommodation deposit, bedclothes and so on. Please take 3000 RMB in cash or deposit in your bank card in case it is needed. Thanks for your understanding!



C. Life Necessities:

You don't need bring necessities such as beddings, towel and toothbrush, etc. You can buy them in many supermarkets.



D. Electrical Equipment:

You can bring relevant digital products like a laptop and accessories, power conversion plugs, power transformers, mobile power supplies, etc. (Domestic electricity in China is 220 volts/50Hz. Chinese standard socket used in China is shown here, please bring your own voltage conversion equipment)



6 Your Safety

Please take good care of your cash and valuable. Your documents are critical vouchers for entering China and registration. These papers should be in safekeeping to avoid causing inconvenience. If there is any trouble, please contact us!

Contact: ZHANG Zihang

Tel: +86-29-82334733 Fax: +86-29-82334733

Email: isa@chd.edu.cn



2

UPON YOUR ARRIVAL IN CHINA



1

How to Get to Chang'an University



A. Undergraduate students register at Chang'an University Weishui Campus

Address: North Zhu Hong Road, Xi'an



① Xi'an Xianyang International Airport — Chang'an University Weishui Campus
About 25 minutes by taxi, charges are around CNY50.



② Xi'an Railway Station — Chang'an University Weishui Campus
About 35 minutes by taxi, charges are around CNY40.



③ Xi'an High Speed Rail Station — Chang'an University Weishui Campus
About 15 minutes by taxi, charges are around CNY15.

* Tips: When taking a taxi please show the following address to the driver:
North Zhu Hong Road Xi'an. 陕西省西安市朱宏路北段, 长安大学渭水校区



B. PhD students, master students and Chinese language students register at Chang'an University (Main Campus).

Address: Chang'an University (Main Campus), Nan Er Huan Zhong Duan Xi'an



① Xi'an Xianyang International Airport — Chang'an University (Main Campus)
a) About 60 minutes by taxi, charges are around CNY150.



b) Take airport shuttle bus to ZhongLou(The Bell Tower) for about 40 minutes, charges are around CNY25, then take a taxi about 15 minutes, CNY15 .



② Xi'an Railway Station — Chang'an University (Main Campus)
About 25 minutes by taxi, charges are around CNY20.



③ Xi'an High Speed Railway North Station — Chang'an University (Main Campus)
a) About 50 minutes by taxi, charges are around CNY55.



b) Take Metro Line 2 to TiYuChang Station, and then transfer to taxi to Chang'an University (Main Campus).

* Tips: When taking a taxi please show the following address to the driver: Chang'an University (Main Campus), Nan Er Huan Zhong Duan, Xi'an 西安市南二环中段长安大学本部北院



2

Pick-up Service

- ① For information of Pick-up Service, please refer to the school email.
- ② When I get to school, where can I live?
 - A. International students usually live in students accommodation on campus or live off campus.
 - B. Please note that students who have not checked in within the preset-time are required to arrange their own accommodation.

3

Registration Specific Location:

- A. Chang'an University Weishui Campus : International Education School, building12
 - B. Chang'an University (Main Campus) : International Education School
- Please register at the designated place, and see the poster at the scene for the registration process.

4

Temporary Residence Registration

- ① Students who want to live off campus must hold a copy of the passport cover page and a copy of the visa (stamped entry stamp) to the local police station to ask for "Registration Form of Temporary Residence" within 24 hours upon your arrival.
- ② Students who want to live on campus must fill in the Registration Form of Residence on the day upon your arrival.

5

长安大学外国留学生求助卡

Help-me Card for New International Students of Chang'an University

您好,我是长安大学新同学,请帮助我,谢谢!

Hello! I am a new international student of Chang'an University, could you do me a favor?

① 您能送我(或告诉我)如何去下面的地方?

Could you please drive or help me to find the following place?

目的地:

A. 长安大学渭水校区: 陕西省西安市朱宏路北段

B. 长安大学本部北院: 西安市南二环中段

Destination:

A. Chang'an University Weishui Campus

B. Chang'an University (Main Campus), Nan ErHuanZhongDuan

② 我现在要去长安大学国际教育学院办理新生报到手续,请问您能告诉我该怎么去哪里吗?

Could you tell me how to get to International Education School? I will register there as a new student.

如有问题,请帮我拨打留学生管理办公室电话号码:

For inquiry, please call Students Affairs Office for me at: +86-29-82334733

非常感谢您的帮助!

Thanks for your help!

